



# US 17 BYPASS & SC 707 / FARROW PARKWAY INTERCHANGE

(BACK GATE INTERCHANGE)

HORRY COUNTY, SOUTH CAROLINA



## LOCATION AND DESIGN PUBLIC HEARING

### SOCASTEE HIGH SCHOOL

Thursday, February 5<sup>th</sup>, 2009

#### MEETING OVERVIEW

Thank you for attending the Public Hearing for the proposed interchange project. The South Carolina Department of Transportation (SCDOT) has completed the preliminary design and environmental document for the proposed improvements, which are available for review at this meeting. Questions and comments are encouraged, and your input is greatly appreciated.

#### PURPOSE

To provide an opportunity to review and discuss individually with representatives of the South Carolina Department of Transportation (SCDOT), Federal Highway Administration (FHWA), and Horry County, preliminary plans for the proposed interchange at the intersection of US 17 Bypass and SC 707/Farrow Parkway. The proposed Interchange will eliminate the traffic signal at the intersection and provide US 17 Bypass uninterrupted movement. This project is funded through Horry County's RIDE II Capital Local Option Sales Tax Program.

#### FORMAT

From 5:00 p.m. until 7:00 p.m., the hearing format will be informal. Displays will be set up in the commons area and project team members from the SCDOT, FHWA, and Horry County will be available to discuss the project with interested citizens on an individual basis.

At 7:00 p.m., a brief, formal presentation will be given in the auditorium on the project purpose and need, schedule, and

potential natural and human impacts to the community. Immediately following the presentation, citizens will have the option to make formal, verbal comments regarding the proposed project. Anyone who desires to verbally comment must sign up between 5:00 and 6:45 p.m. Each comment will be limited to two minutes and may not be transferred.

The informal portion of the Public Hearing will continue during this time (from 7:00 p.m. to 8:00 p.m.).

#### PROJECT DESCRIPTION

The proposed Interchange will eliminate the traffic signal at the intersection and provide US 17 Bypass uninterrupted movement.

The construction of the new Interchange will require the intersections with US 17 Bypass at Coalition Drive, Temperance Drive, Ranchette Circle, Harbour Towne Drive, Emory Road to be closed. Port Drive and Palmetto Pointe will be restricted to right in right out only.

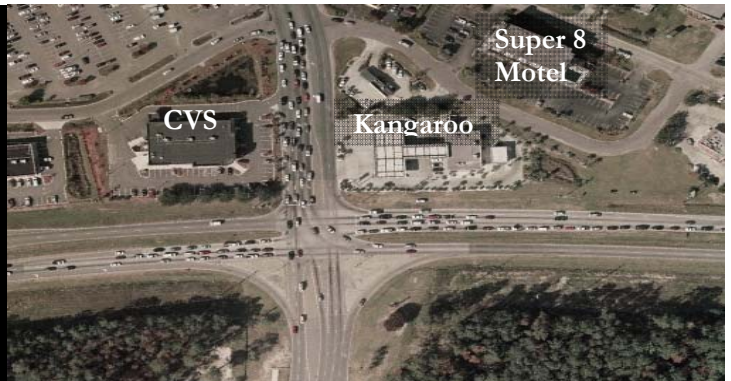
The following recommendations are being implemented as part of the improvements:

- Construct a Single Point Urban Interchange (SPUI) interchange to decrease traffic delays
- Extend the frontage road to intersect Temperance Drive and construct a road between Temperance Drive and Farrow Pkwy
- Extend Macklen Road to intersect Harbour Towne Drive at Port Drive
- Construct a U-turn at the north end of the interchange under the bridge.

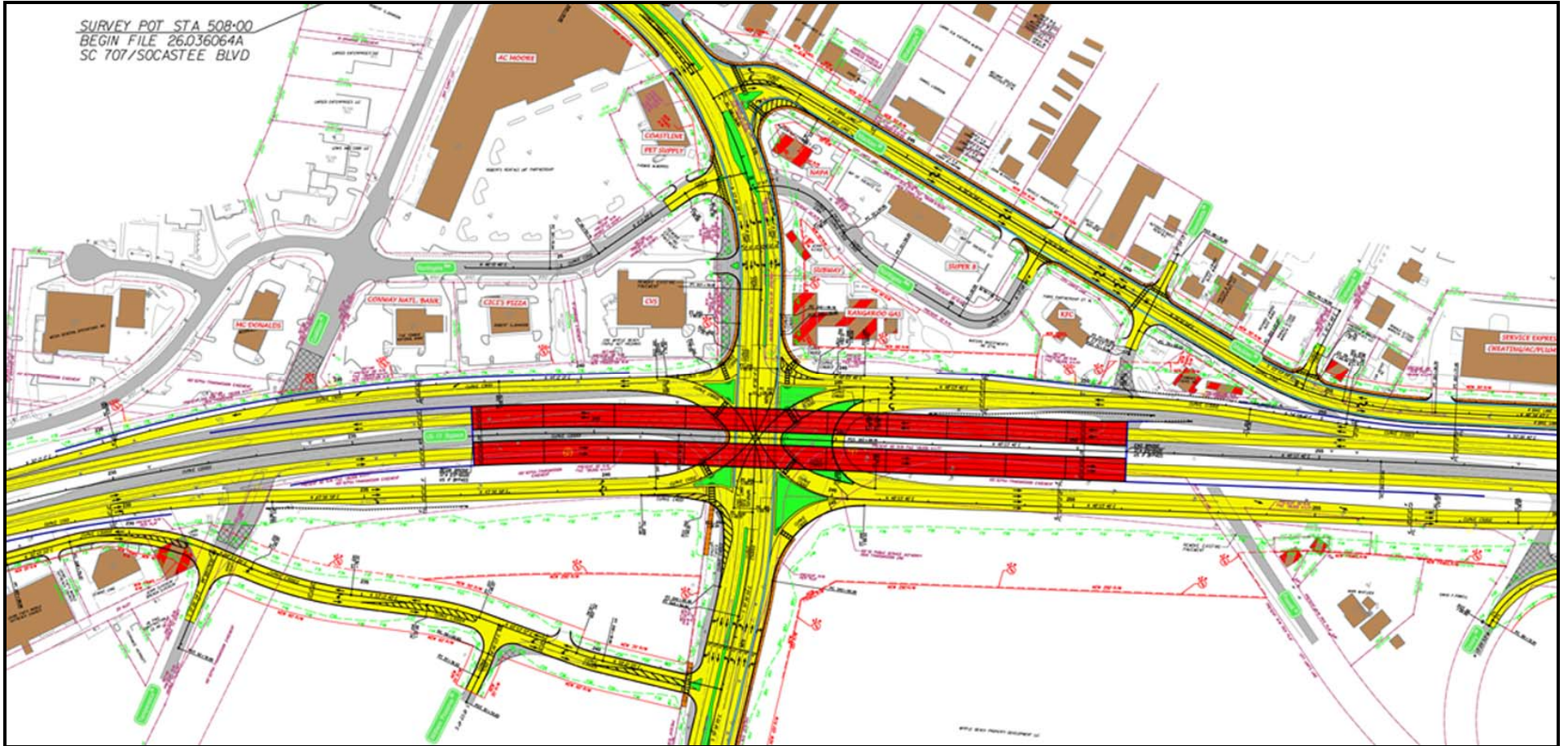
#### Public Comments

Comments received from this meeting will be carefully reviewed. If you would like to make a written comment during this meeting, please complete the comment form included in this handout, and place it in the comment box. **For inclusion in the official transcript, please mail all written comments by February 20, 2009 to:**

SCDOT, Attn: Michael Barbee, P.E., Program Manager, 955 Park Street, Columbia, SC 29201, Phone: (803) 737-4034  
Email: BarbeeMW@SCDOT.org



Aerial View of Back Gate Area



**US 17 BYPASS & SC 707/FARROW PKWY INTERCHANGE (SPUI)**