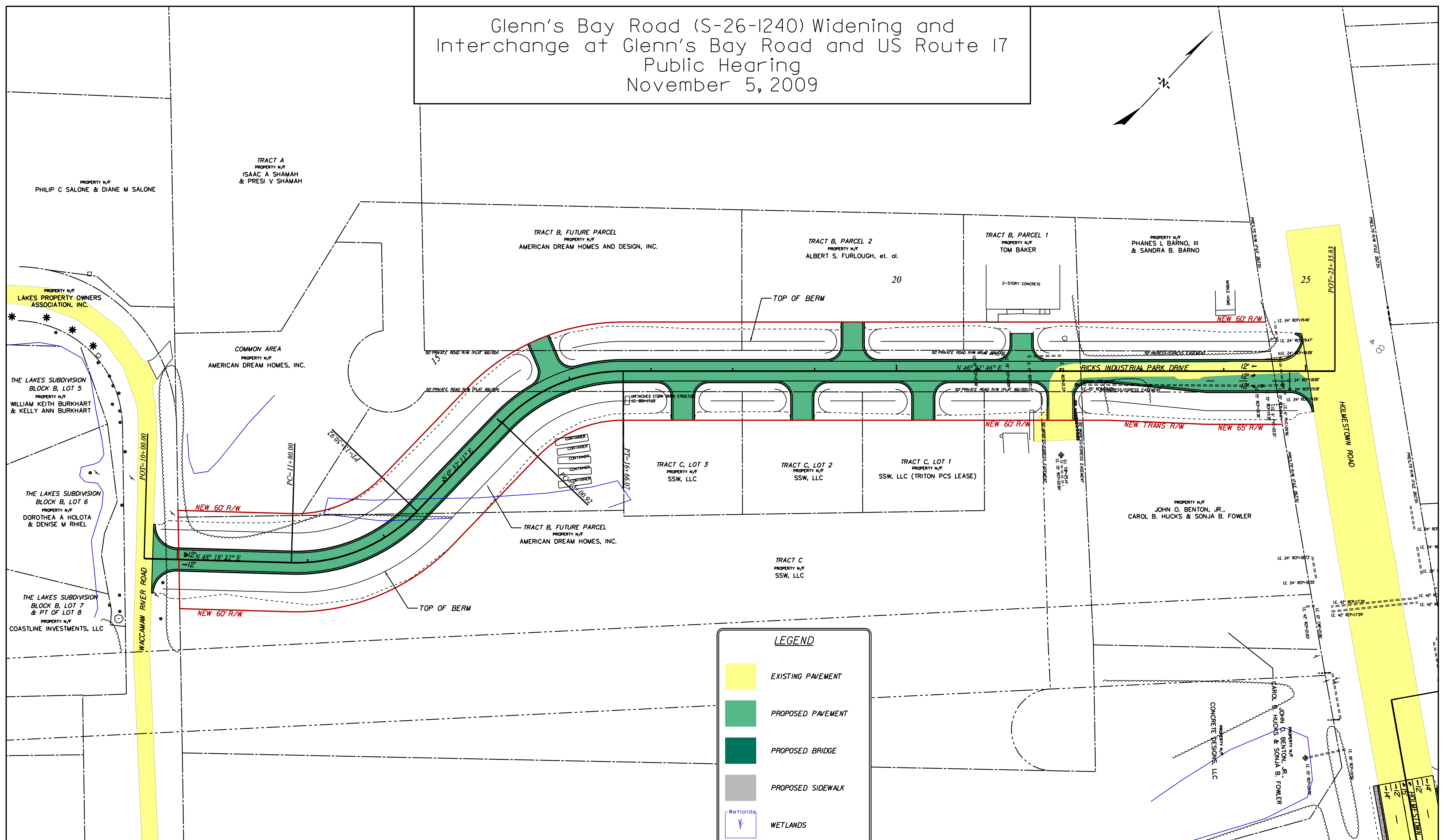
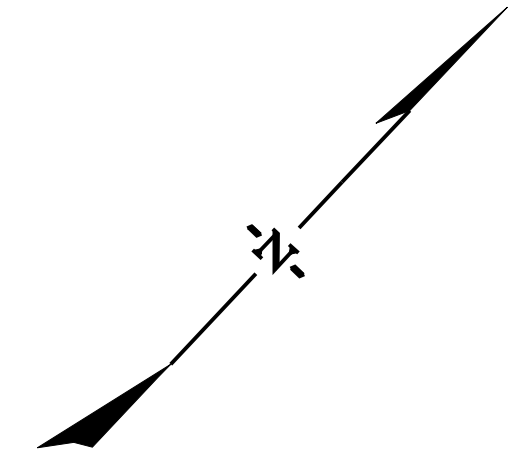


Glenn's Bay Road (S-26-1240) Widening and Interchange at Glenn's Bay Road and US Route 17

Public Hearing November 5, 2009



LEGEND

- EXISTING PAVEMENT
- PROPOSED PAVEMENT
- PROPOSED BRIDGE
- PROPOSED SIDEWALK
- WETLANDS
- PAVEMENT REMOVAL
- CONSTRUCTION LIMITS
- PRESENT RIGHT OF WAY
- NEW RIGHT OF WAY
- NEW CONTROLLED ACCESS

PR
100 YEARS

Parsons Brinckerhoff
150 Main Street
Suite 700
Columbia S.C. 29201

SCDOT

Horry County
SOUTH CAROLINA



SCDOT

Horry County
SOUTH CAROLINA

PR
100 YEARS

Parsons Brinckerhoff
150 Main Street
Suite 700
Columbia S.C. 29201