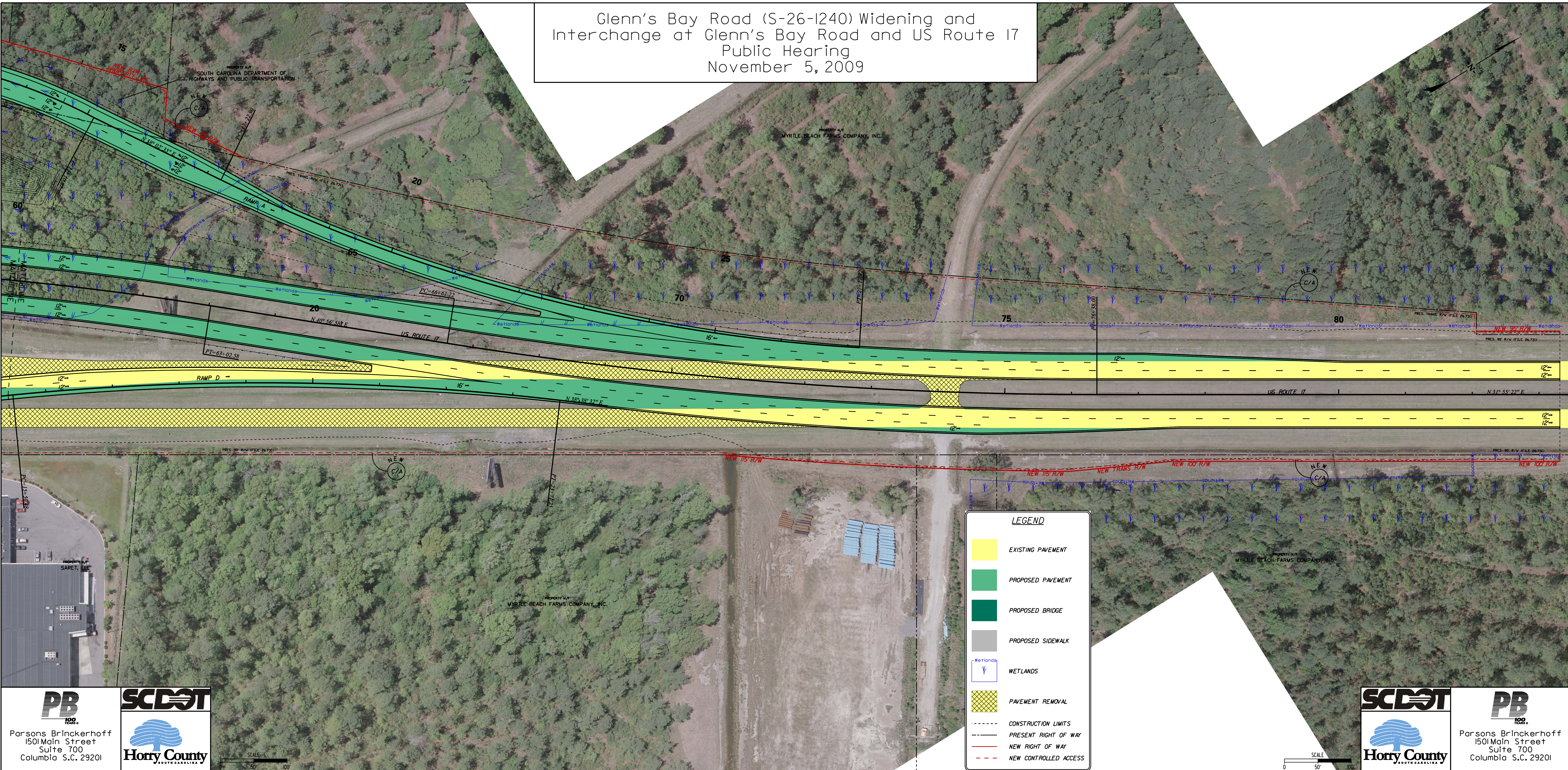


Glenn's Bay Road (S-26-I240) Widening and Interchange at Glenn's Bay Road and US Route 17
 Public Hearing
 November 5, 2009



LEGEND

	EXISTING PAVEMENT
	PROPOSED PAVEMENT
	PROPOSED BRIDGE
	PROPOSED SIDEWALK
	WETLANDS
	PAVEMENT REMOVAL
	CONSTRUCTION LIMITS
	PRESENT RIGHT OF WAY
	NEW RIGHT OF WAY
	NEW CONTROLLED ACCESS

PB
 100 YEARS
 Parsons Brinckerhoff
 1501 Main Street
 Suite 700
 Columbia S.C. 29201

SCDOT
 Horry County
 SOUTH CAROLINA

SCDOT
 Horry County
 SOUTH CAROLINA

PB
 100 YEARS
 Parsons Brinckerhoff
 1501 Main Street
 Suite 700
 Columbia S.C. 29201