

Glenn's Bay Widening and Interchange Project

Media Briefing

AGENDA

September 7, 2016

- I. Welcome
- II. Overview of Project
- III. Timeline of Construction
- IV. Contacts for the Project

Sales Tax Overview

On November 7, 2006, Horry County voters, by a 61.4 to 38.6 percent margin, supported a One-Cent Capital Projects Sales Tax for roads. This tax went into effect on May 1, 2007, and increased the level of sales tax in Horry County an additional penny on all retail sales, accommodations and prepared food and beverage.

Horry County was slated to receive \$425,307,500 over the seven-year life of the one-cent Capital Projects Sales Tax, but \$446M was actually collected. All of the road projects to be funded from the One-Cent Capital Projects Sales Tax are specifically listed below:

Original Budget	Revised Budget Range	Prioritized Road Projects
1. \$19,600,000:		Pave 20 miles of County dirt roads (Complete)
2. \$915,000:		Resurface 12 miles of County roads (Complete)
3. \$49,500,000:	\$115 to \$120 million	Construct grade separated interchange at the intersection of U.S. Hwy 17 Bypass and SC Hwy. 707 at the back gate of the Myrtle Beach Air Base (Complete)
4. \$132,250,000:	\$100 to \$105 million	Widen SC Hwy. 707 from Enterprise Road to the County line including intersection improvements at SC Hwy 544 (Under Construction)
5. \$25,750,000:		Pave 25 miles of County dirt roads (Complete)
6. \$990,000:		Resurface 12 miles of County roads (Complete)
7. \$46,000,000:	\$15 to \$20 million	Construct Aynor overpass (Complete)
8. \$1,035,000:		Resurface 12 miles of County roads (Complete)
9. \$76,000,000:	\$75 to \$80 million	Widen Glenn's Bay Road to 3 lanes and construct a grade separated interchange at US Hwy. 17 Bypass (Under Construction)
10. \$1,080,000:		Resurface 12 miles of County roads (Complete)
11. \$27,750,000:		Pave 25 miles of County dirt roads (Complete)
12. \$1,125,000:		Resurface 12 miles of County roads (Complete)
13. \$6,500,000:		Pave 2 lanes of International Drive from Carolina Forest to SC Hwy. 90 (Waiting to go out for bid.)
14. \$682,500:		Resurface 7 miles of County roads (Complete)
15. \$36,100,000		Pave 30 miles of County dirt roads (50% Complete)

Horry County Council passed a resolution of May 15, 2007, to enter into an intergovernmental agreement with the South Carolina Department of Transportation (SCDOT) to act as project/construction manager for those named state highway projects included on the road list.

Those road projects include:

1. A grade separated interchange at the intersection of US Highway 17 Bypass and SC Highway 707 at the backgate of the former Myrtle Beach Air Base;
2. Widen SC Highway 707 from Enterprise Road to the county line including intersection improvements at SC Highway 544;
3. Construction of the Aynor Overpass; and
4. Widen Glenn's Bay Road to 3-lanes and construct a grade separated interchange at US Highway 17 Bypass.

As project/construction manager, the SCDOT will prepare for each project listed above a detailed scope of work, budget and schedule based upon three phases for each project:

- a. design, preliminary engineering and environmental work;
- b. right-of-way acquisition; and
- c. construction

Glenn's Bay Road Widening & Interchange

Description: Widening of Glenn's Bay Road (S-26-1240) from a 2-lane shoulder section to a 3-lane curb and gutter facility with sidewalks on both sides from US Route 17 Bypass to US Route 17 Business, a distance of approximately 1.6 miles. The project will also include an interchange at US Route 17 Bypass and Glenn's Bay Road.

Status: Right-of-way acquisition and the development of the construction plans are in progress. Coordination with the US Army Corps of Engineers is ongoing concerning the permit approval and mitigation plan.

Consultant Selection: December 2007 **(Complete)**

Consultant notice-to-proceed: March 2008 **(Complete)**

Preliminary Engineering: Spring 2008 - Winter 2010 **(Complete)**

Right-of-way acquisition: Winter 2010 – Winter 2013 **(Complete)**

Advertising of Construction Bids: May 2014 **(Complete)**

Construction Bids Received and awarded: July 2014 **(Complete)**

Construction: November 2014 – Summer 2018

Contacts for RIDE 2 and 3 Projects

State Road Projects

Leah Quattlebaum

Horry County Project Manager

South Carolina Dept. of Transportation

(803) 737-1751

Quattleblb@scdot.org

General Information

Lisa Bourcier

Public Information Officer

Horry County Government

(843) 915-5390

bourcier@horrycounty.org

US-17 Bypass Interchange		
Stage 1	Clearing (US-17 & Glenns Bay)	Fall 2014 - Spring 2015
	Relocate Moving Items - signs, etc.	
	Relocate Waccamaw River Rd -The Lakes	
	Build Lake Access #2 - The Lakes	
	Utility Relocations	
Stage 1A	Install Barrier Wall	Spring 2015 - Spring 2016
	Install Bridge Lift	
	Install Temporary Drainage	
	Build 1st half of Box Culvert	
	Build Temp. Ramps A & B	
	Build Bridge Embankment	
Stage 2	Begin Bridge	Spring 2016 - Fall 2016
	Build Signal at Ramps A & B	
	Shift US-17 SB Traffic onto Ramps A & B	
	Construct Median Crossovers	
Stage 2A	Shift US-17 NB Traffic onto Ramps A & B	Fall 2016 -Winter 2017
	Close existing Glenns Bay Intersection	
	Complete Drainage on US-17 Bypass	
	Complete Box Culvert on US-17 Bypass	
	Complete US-17 NB Embankment	
	Build Ramps C & D	
	Complete Bridge	
Stage 3	Construct Tie for US-17 NB	Winter 2017 - Spring 2018
	Shift US-17 NB Traffic onto Bridge	
	Open Ramps C & D	
	Remove part of Ramps A & B	
	Remove Median Crossovers	
Stage 3A	Shift US-17 SB Traffic onto Bridge	Spring 2018 - Summer 2018
	Remove excess pvmt on Ramps A & B	
Stage 4	Permanent Signs	Summer 2018
	Final Surface Paving	
	Permanent Pavement Markings	

Glenns Bay Road		
Entire Glenns Bay Road	Clearing & Moving Items	Fall 2014 - Spring 2015
US-17 Bus. to Ashton Glenn	Utilities	Spring 2015 - Spring 2016
	Storm Drain	Spring 2016 - Fall 2016
	Curb & Gutter, Sidewalk	Fall 2016 - Winter 2016
	Paving	Winter 2016 - Spring 2017
Ashton Glenn - Chandler Drive	Utilities	Spring 2016 - Winter 2016
	Storm Drain	Winter 2016 - Spring 2017
	Curb & Gutter, Sidewalk	Spring 2017 - Winter 2017
	Paving	Winter 2017 - Summer 2018
Chandler Drive - US-17 Bypass	Utilities	Spring 2016 - Winter 2016
	Storm Drain	Winter 2016 - Spring 2017
	Curb & Gutter, Sidewalk	Spring 2017 - Winter 2017
	Paving	Winter 2017 - Summer 2018
Entire Glenns Bay Road	Final Surface Paving and Pvmt Markings	Summer 2018

Glenn's Bay Road Widening and Interchange Project

September 7, 2016



Project Background

- Part of the RIDDE II One Cent Capital Sales Tax Program
- 9th Priority on RIDDE II Program
- Estimated \$80 million total project cost
- Project includes an interchange at US 17 Bypass and Glenn's Bay Rd. and the widening of Glenn's Bay Rd. from U17 Bypass to US 17 Business.

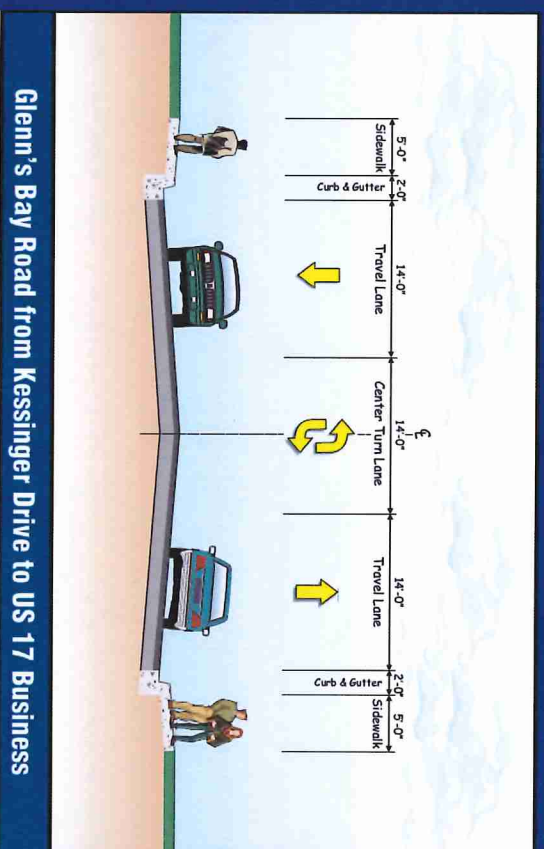
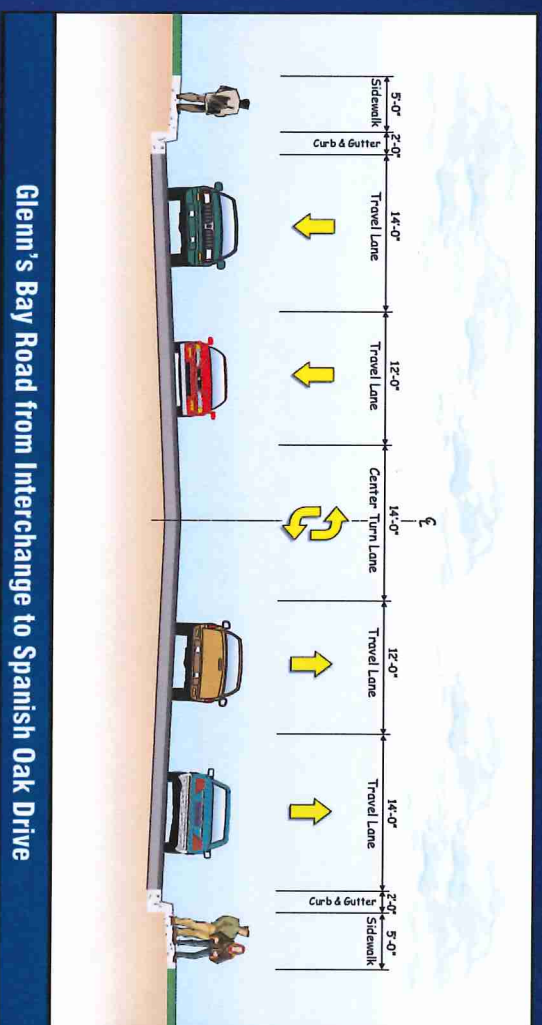


Glenn's Bay Road Widening and Interchange at US 17 Bypass

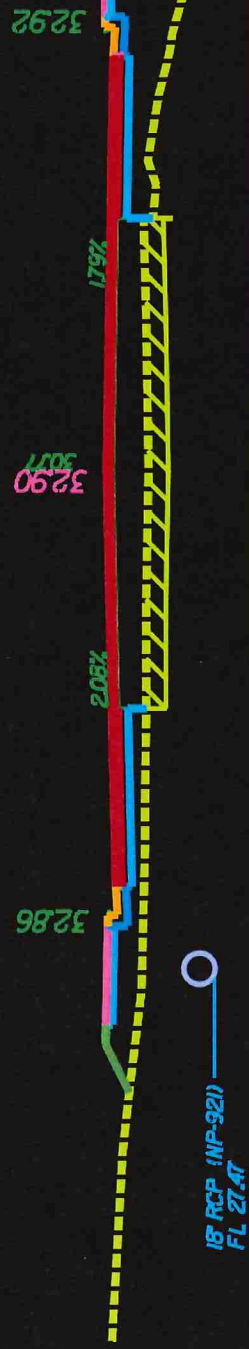


Cross Section of Glenn's Bay Rd.

- 5 lane cross section from Interchange to Spanish Oak Drive.
- Lane drops in eastbound direction at Spanish Oak Drive.
- 3 lane cross section from Kessinger Drive to US 17 Business.



Cross Section of Glenn's Bay Rd



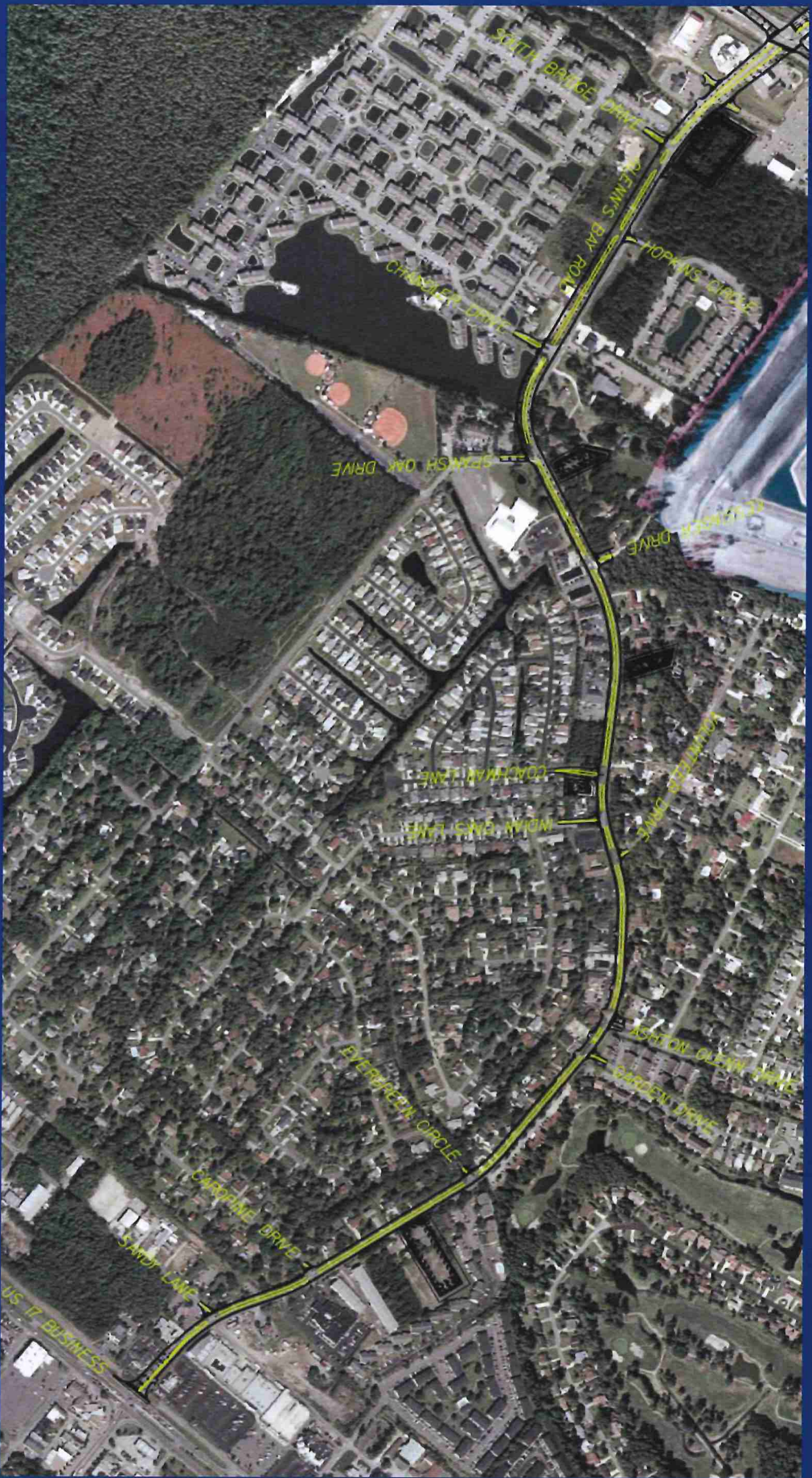
Project Schedule

- Construction bids received on July 8, 2014. Low bidder was Southern Asphalt in the amount of \$46,389,431.35
- Contractor notice to proceed issued in November 2014
- Clearing activities and utility relocations along Glenn's Bay Rd. began late 2014.
- Construction is anticipated to be complete Summer 2018.

Traffic Control on US 17 Bypass



Traffic Control on Glenn's Bay Rd.



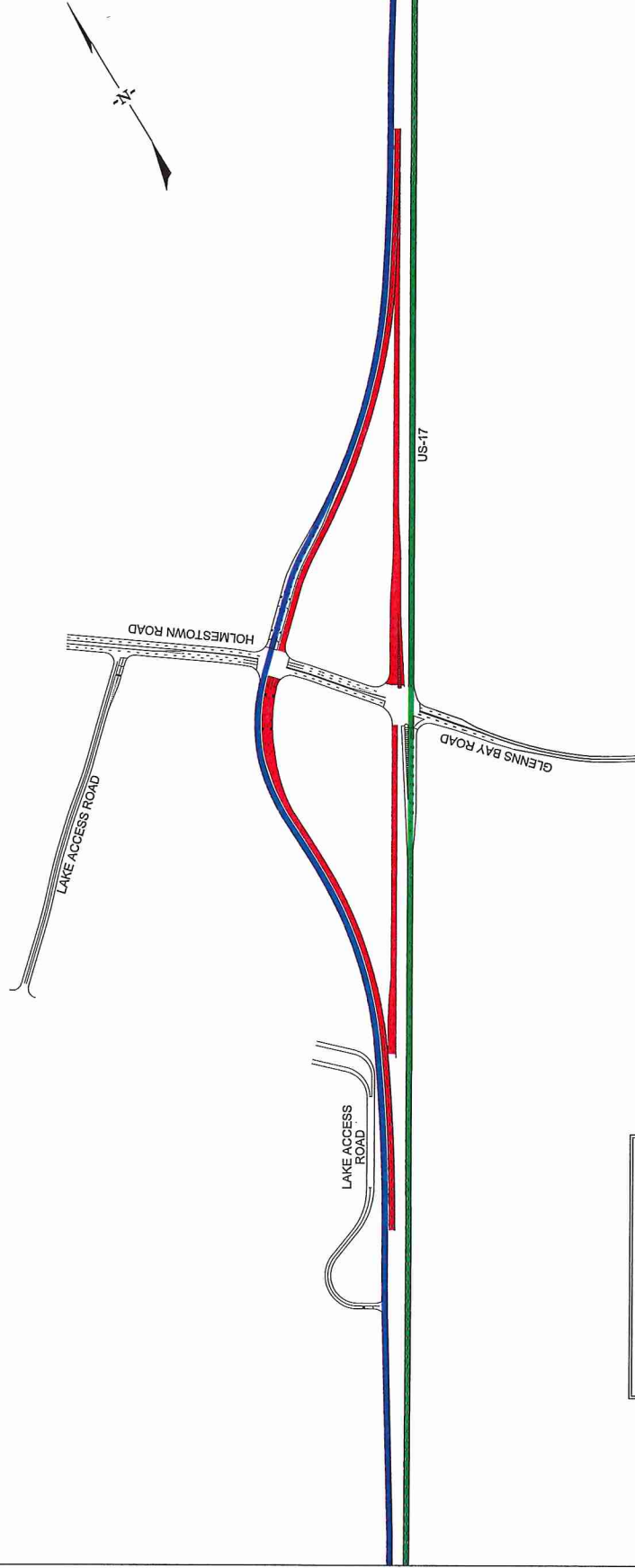
GLENN'S BAY WIDENING & INTERCHANGE PROJECT UPDATE

SOUTHBOUND LANE SWITCH

The US-17 Bypass southbound lanes, at the intersection of Glenn's Bay Road, will be switching onto the new temporary ramps Sunday evening, September 11, beginning at 6 p.m. There will be a lane closure in the outside southbound lane from Sutter Drive to St. James Road. This lane closure will move to the inside southbound lane once all tie-in work is complete in the outside lane. At this time traffic will be shifted to the new temporary ramps.

Contractors will start the switch at 6 p.m. that evening with the goal of having the shift completed by 6 a.m. on Monday, September 12. During this work, The Lakes subdivision's current entrance on US-17 Bypass will close temporarily from Sunday evening at 5 p.m. to 6 a.m. until the traffic shift is complete. All residents in The Lakes are asked to use the new entrance off of Holmestown Road during this time.

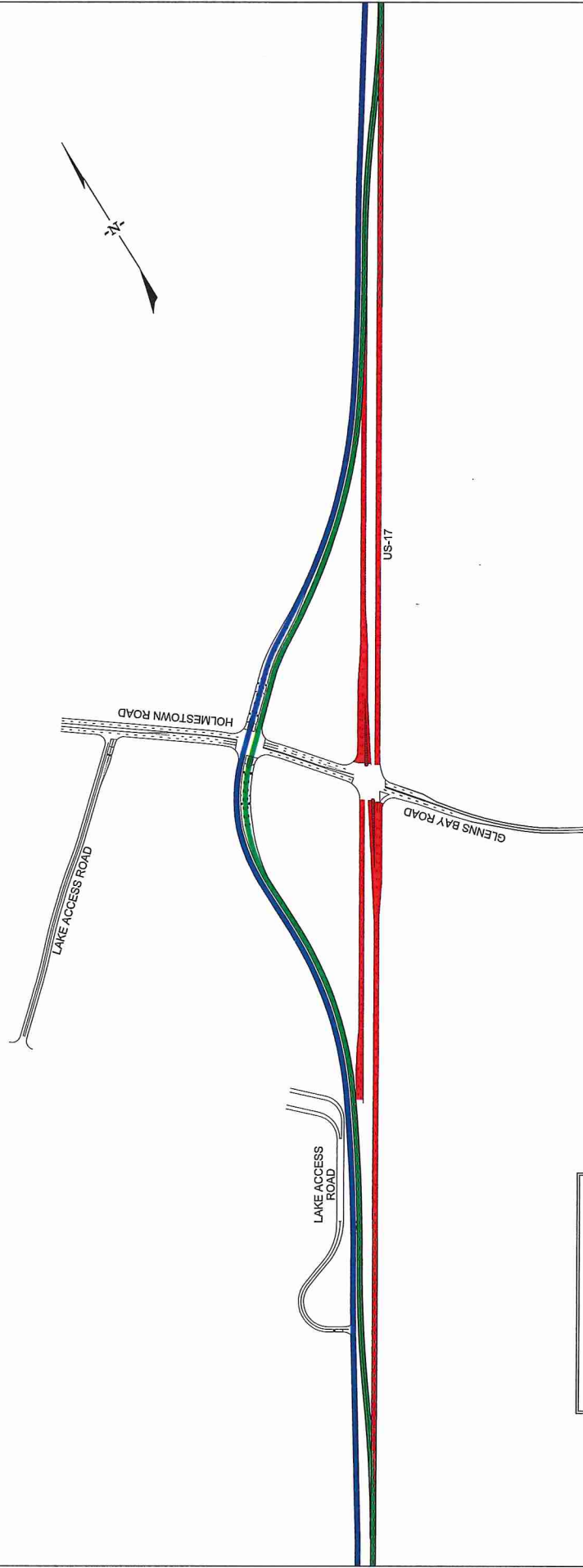
TEMPORARY US-17 SOUTHBOUND TRAFFIC PATTERN



LEGEND	
■	US-17 NORTHBOUND TRAFFIC
■	US-17 SOUTHBOUND TRAFFIC
■	CLOSED ROAD



TEMPORARY US-17 NORTHBOUND & SOUTHBOUND TRAFFIC PATTERN



LEGEND

- US-17 NORTHBOUND TRAFFIC
- US-17 SOUTHBOUND TRAFFIC
- CLOSED ROAD

