

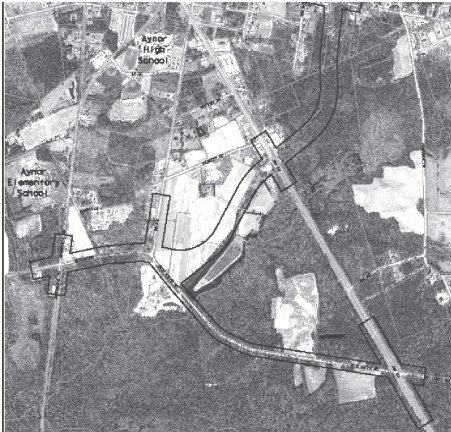
AYNOR OVERPASS PROJECT

Update



Penny Sales Tax for Roads

The Aynor Overpass was identified as a priority project in Horry County's RIDE II sales tax program. The new overpass will serve as the only uninterrupted thoroughfare that connects the two halves of Aynor that are separated by U.S. 501. This will not only decrease the travel time for commuters, but also decrease the number of accidents throughout the area. In the past three years, there have been 37 accidents alone along U.S. 501 between Bluewater Road and Jordanville Road which is less than 1.5 miles.



The project will consist of approximately 2.5 miles of roadway, nearly 1.5 miles being new. As illustrated in Figure 1, the main line of the project will include a landscaped median that will separate traffic. In addition, there will be a 10 foot multi-use path that will also span U.S. 501 to be used by the citizens of Aynor. The Aynor Overpass project also includes intersection improvements at four major intersections throughout the town and access improvements to U.S. 501 to increase safety and ease of commute.

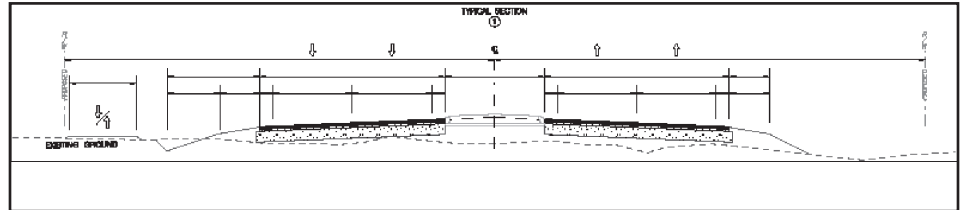


Figure 1 – The typical section of the new roadway will include a 10' multi-use path.

The study corridor, outlined in black, represents the area the project could be potentially located. The corridor only represents the width of our study area, the actual footprint of the roadway is much narrower. The entire corridor is 300 feet wide with the exception of Bluewater Road which is 200 feet. Presently, there are 11 parcels affected by the alignment. As proposed, we do not anticipate direct impact to residential or commercial structures. The study corridor is approximately 500 feet from Aynor Elementary School and less than half a mile from Aynor High School.



Berry's Corner

On behalf of Horry County, SCDOT, RPM Engineers and the design team, we are excited to work with the residents of Aynor in providing this new overpass. Many of you may have seen some of our team members performing surveys, wetland delineations, and other field investigations along 501 or adjacent to your property. We are working diligently to collect data to begin design within the study corridor. This data collection is necessary to produce drawings that can be presented to the residents of Aynor. We appreciate your patience and look forward to presenting our findings in a public information meeting scheduled for July 2008. In the meantime, we will keep you posted of our progress with our monthly newsletter that will be disseminated with the local paper. Also, feel free to contact me with any question you may have.

Berry Still, PE
RPM Engineers
bstill@rpmengineers.com
Office: 803-996-2900
Cell Phone 803-315-6318

WORK COMPLETED OR CURRENTLY BEING PERFORMED

- Aerial mapping of proposed corridor
- Traffic count at existing intersection
- Begin environmental data collection
 - Roadway design criteria
- Begin roadway preliminary plans

JUNE'S MILESTONES

- Finish environmental data collection
 - Finish traffic study
 - Complete geological Information collection
- Begin environmental assessment
 - Finish and submit preliminary Roadway plans